

Compassion – Courage – Hope – Integrity – Justice
Respect – Responsibility - Wisdom



Herne Bay Junior School

Safeguarding/ Child Protection Policy

based on Keeping Children Safe in Education DfE guidance September 2018

Policy Agreed: September 2019

Policy Review: September 2020

Herne Bay Junior School Safeguarding/ Child Protection Policy

Key Contact Personnel in School

Designated Safeguarding Lead:
Rowena Evett-Collins, Deputy Head teacher

Deputy Designated Safeguarding Lead(s):
Melody Kingman, Headteacher; Chris Thomas,
Deputy Headteacher; Sammy Black, Senior Leader
Hollie Edwards, Director of Mental Health and
Wellbeing.

Named Safeguarding Governor: George Smart

This is a core policy that forms part of the induction for all staff. It is a requirement that all members of staff have access to this policy and sign to say they have read and understood its contents.

Date written: September 2019

Date agreed and ratified by Governing Body:
September 2019

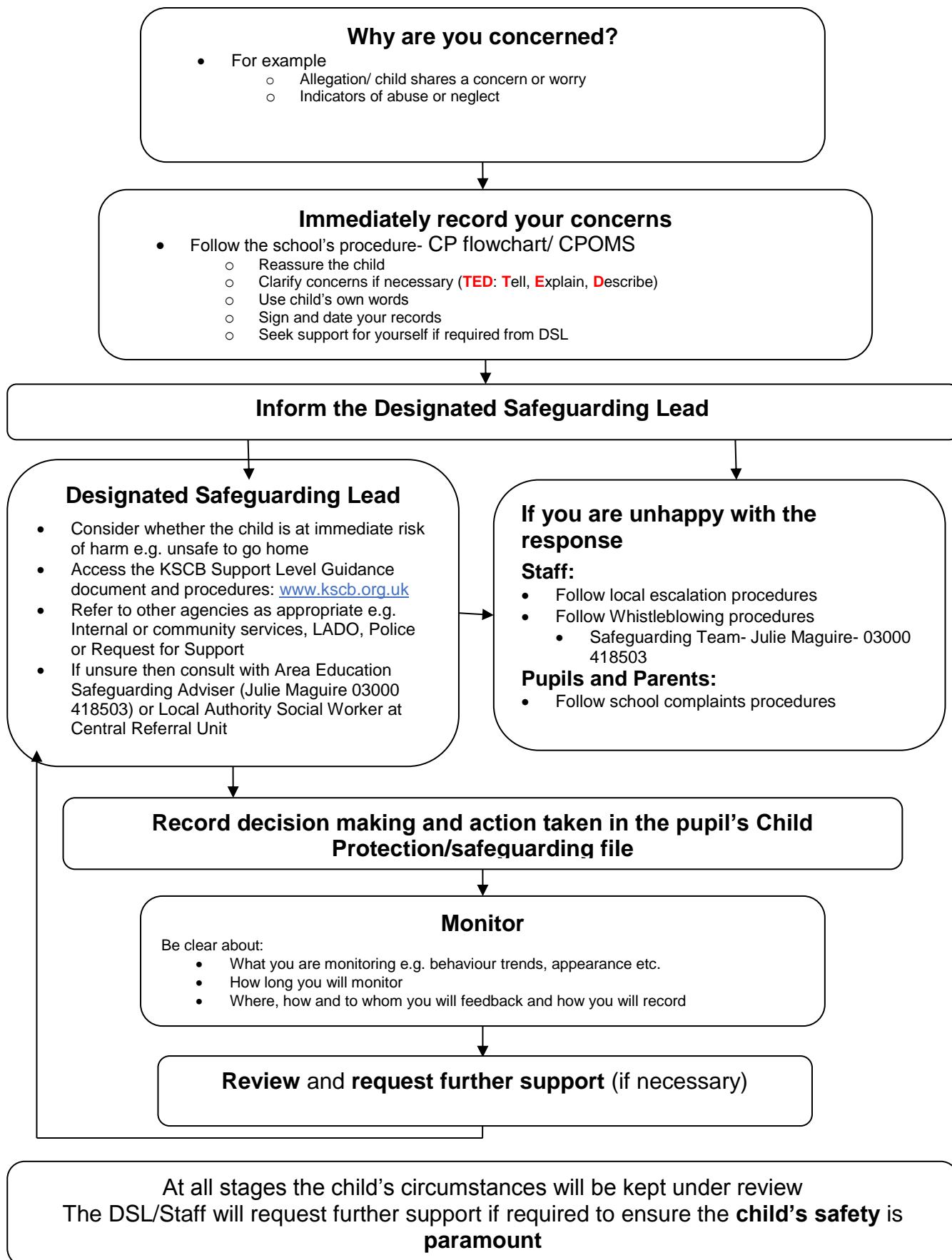
Date of next review: September 2020

This policy will be reviewed at least annually and/or following any updates to national and local guidance and procedures.

Contents

	Page no
What to do if you have a welfare concern - flowchart	4
1. Introduction and Ethos	5
2. Definition of Safeguarding	5
3. Context	5
4. Related Safeguarding Policies	6
5. Key Responsibilities	7
6. Recognition and Types of Abuse and Neglect	8
7. Safeguarding and Child Protection Procedures	9
8. Record Keeping	10
9. Multi-Agency Working	11
10. Confidentiality and Information Sharing	11
11. Complaints	11
12. Staff induction, Awareness and Training	11
13. Safe Working Practice	12
14. Staff Supervision and Support	12
15. Safer Recruitment	13
16. Allegations Against Members of Staff and Volunteers	13
17. Safeguarding Children with Special Educational Needs and Disabilities	14
18. Online Safety	14
19. Curriculum and Staying Safe	15
20. The Use of School Premises by Other Organisations	15
21. Security	15
22. Monitoring and Review	16
23. Local Support	16
24. National Support	17

What to do if you have a welfare concern in Herne Bay Junior School



1. Introduction and Ethos

- Herne Bay Junior School is a community and all those directly connected (staff, volunteers, governors, parents, families and pupils) have an essential role to play in making it safe and secure. Herne Bay Junior School recognise our statutory responsibility to safeguard and promote the welfare of all children.
- Herne Bay Junior School recognises the importance of providing an ethos and environment within school that will help children to be safe and feel safe. In our school children are respected and encourage to talk openly.
- Our school core safeguarding principles are:
 - We are an important part of the wider safeguarding system for children.
 - It is our whole school responsibility to safeguard and promote the welfare of children.
 - All children (defined as those up to the age of 18) regardless of age, gender, ability, culture, race, language, religion or sexual identity, have equal rights to protection.
 - All children have a right to be heard and to have their wishes and feelings taken into account.
 - All our staff understand safe professional practice and adhere to our safeguarding policies.

2. Definition of Safeguarding

- “Safeguarding is not just about protecting children from deliberate harm. It includes a wide range of issues relating to pupil’s welfare, health and safety.” (Inspecting safeguarding in early years, education and skills, Ofsted, September 2016).
- All safeguarding policies will be reviewed on an annual (minimum) basis by the Governing Body which has responsibility for oversight of school safeguarding and child protection systems. The Designated Safeguarding Lead / Head Teacher will ensure regular reporting on safeguarding activity and systems in school to the Governing Body. The Governing Body will not receive details of individual pupil situations or identifying features of families as part of their oversight responsibility.
-
- There are four main elements to our child protection policy
 - **Prevention** (e.g. positive, supportive, safe school culture, curriculum and pastoral opportunities for children, safer recruitment procedures);
 - **Protection** (by following the agreed procedures, ensuring all staff are trained and supported to respond appropriately and sensitively to safeguarding concerns);
 - **Support** (for all pupils, parents and staff, and where appropriate specific intervention for those who may be at risk of harm);
 - **Working with parents and other agencies** (to ensure appropriate communications and actions are undertaken).
- The procedures contained in this policy apply to all staff (including temporary staff and volunteers) and governors and are consistent with those of Kent Safeguarding Children Board (KSCB).

3. Context

- This policy has been developed in accordance with the principles established by the Children Acts 1989 and 2004 and related guidance. This includes:
 - DfE guidance Keeping Children Safe in Education 2019 (KCSIE)
 - Working Together to Safeguard Children 2018 (WTSC)
 - Ofsted guidance ‘Inspecting safeguarding in early years, education and skills’ (2016)

- Framework for the Assessment of Children in Need and their Families (2000)
 - Kent and Medway Safeguarding Children Procedures (Online)
 - Early Years and Foundation Stage Framework 2017 (EYFS)
- Section 175 of the Education Act 2002 requires school governing bodies, local education authorities and further education institutions to make arrangements to safeguard and promote the welfare of all children who are pupils at a school, or who are students under 18 years of age. Such arrangements will have to have regard to any guidance issued by the Secretary of State.
- The school acknowledges that this policy recognises a range of specific safeguarding issues including (but not limited to):
 - Bullying (including cyberbullying)
 - Children Missing Education (CME)
 - Child missing from home or care
 - Child Sexual Exploitation (CSE)
 - Domestic violence
 - Drugs and alcohol misuse
 - Fabricated or induced illness
 - Faith abuse
 - Female Genital Mutilation (FGM)
 - Forced marriage
 - Gangs and youth violence
 - Gender based abuse and violence against women and girls
 - Hate
 - Honour based abuse
 - Mental health
 - Missing children and adults
 - Online safety
 - Prevent duty (radicalisation and extremism)
 - Private fostering
 - Relationship abuse
 - Human trafficking and modern slavery
 - Youth produced sexual imagery or “Sexting”

(Also see Annex A within ‘Keeping children safe in education’ 2018)

4. Related Safeguarding Policies

- This policy is one of a series in the school’s integrated safeguarding portfolio and should be read in conjunction with the policies as listed below:
 - Behaviour Management, linked to the Use of Physical Intervention
 - Searching, screening and confiscation
 - Online Safety and Social Media
 - Anti-Bullying
 - Data Protection and Information Sharing
 - Image Use
 - Sex & Relationship Education
 - Personal and Intimate Care
 - Health and Safety
 - Attendance
 - Risk Assessments (e.g. school trips, use of technology)
 - First Aid and Accidents

- Managing Allegations Against Staff
- Staff Behaviour Policy (including Acceptable Use of Technology)
- Safer Recruitment
- Whistleblowing

5. Key Responsibilities

- The governing body, proprietor and management committees have read and will follow KCSIE 2019.
- The school has a nominated governor for safeguarding. The nominated governor will take the lead role in ensuring that the school has an effective policy which interlinks with other related policies; that locally agreed procedures are in place and being followed; and that the policies are reviewed at least annually and when required.
- The Governing Body, Headteacher and Leadership Team will ensure that the Lead DSL is properly supported in their role.

5.1 Designated Safeguarding Lead (DSL)

- The school has appointed a member of the leadership team Rowena Evett-Collins as Lead Designated Safeguarding Lead (DSL). The DSL has the overall responsibility for the day to day oversight of safeguarding and child protection systems in school.
- The DSL will undergo appropriate and specific training to provide them with the knowledge and skills required to carry out their role. The DSL and any deputy DSL's training will be updated formally every two years but their knowledge and skills will be updated through a variety of methods at regular intervals and at least annually.
- Deputy DSLs are trained to the same standard as the DSL. Whilst the activities of the DSL may be delegated to the deputies, the ultimate lead responsibility for safeguarding and child protection remains with the DSL and this responsibility will not be delegated.
- **It is the role of the DSL to:**
 - Act as the central contact point for all staff to discuss any safeguarding concerns
 - Maintain a confidential recording system for safeguarding and child protection concerns
 - Coordinate safeguarding action for individual children
 - In the case of Children Looked After the DSL should have the details of the child's social worker and the name of the virtual school head in the authority that looks after the child (with the DSL liaising closely with the designated teacher)
 - Liaise with other agencies and professionals in line with WTSC 2018
 - Ensure that locally established referral procedures are followed as necessary
 - Represent, or ensure the school is appropriately represented at multi-agency safeguarding meetings (including Child Protection conferences)
 - Manage and monitor the school's role in any multi-agency plan for a child.
 - Be available during term time (during school hours) for staff in the school to discuss any safeguarding concerns
 - Ensure all staff access appropriate safeguarding training and relevant updates in line with the recommendations within KCSIE (2018)

5.2 Members of Staff

- **All members of staff have a responsibility to:**
- To provide a safe environment in which children can learn.
- Be prepared to identify children who may benefit from early help.
- To understand the early help process and their role in it.
- To understand your schools safeguarding policies and systems.
- To undertake regular and appropriate training which is regularly updated.
- Be aware of the process of making referrals to children's social care and statutory assessment under the Children Act 1989.
- Know what to do if a child tells them that he or she is being abused or neglected.
- Know how to maintain an appropriate level of confidentiality.
- Be aware of the indicators of abuse and neglect so that they are able to identify cases of children who may be in need of help or protection.

5.3 Children and Young People

- **Children and young people (pupils) have a right to:**
 - Contribute to the development of school safeguarding policies
 - Receive help from a trusted adult.
 - Learn how to keep themselves safe, including online

5.4 Parents and Carers

- **Parents/carers have a responsibility to:**
 - Understand and adhere the relevant school/policies and procedures.
 - Talk to their children about safeguarding issues with their children & support the school in their safeguarding approaches.
 - Identify behaviours which could indicate that their child is at risk of harm including online and seek help and support from the school, or other agencies.
- Parents can obtain a copy of the school Child Protection Policy and other related policies on request and can view them via the school website <http://www.hernebay-jun.kent.sch.uk>

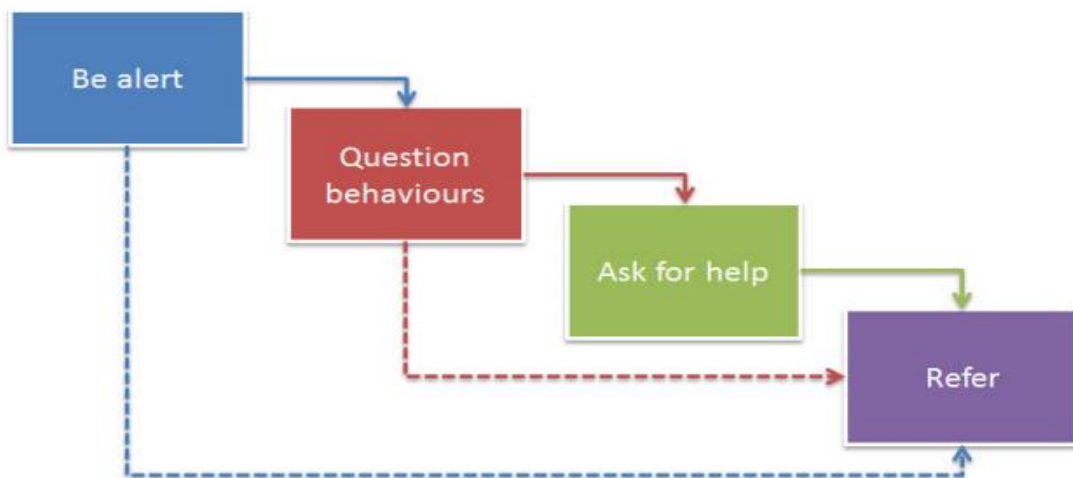
6. Recognition and Types of Abuse and Neglect

- All staff in school should be aware of the definitions and indicators of abuse and neglect. There are four categories of abuse:
 - Physical abuse
 - Sexual abuse
 - Emotional abuse
 - Neglect
- Members of staff are aware that child welfare concerns may arise in many different contexts and can vary greatly in terms of their nature and seriousness.
- The warning signs and symptoms of child abuse and neglect can vary from child to child. Children also develop and mature at different rates, so what appears to be worrying behaviour for a younger child might be normal for an older child.

- Parental behaviors' may also indicate child abuse or neglect, so staff should also be alert to parent-child interactions or concerning parental behaviours; this could include parents who are under the influence of drugs or alcohol or if there is a sudden change in their mental health.
- By understanding the warning signs, we can respond to problems as early as possible and provide the right support and services for the child and their family. It is important to recognise that a warning sign doesn't automatically mean a child is being abused.

7. Safeguarding and Child Protection Procedures

- Herne Bay Junior School adheres to the KSCB Safeguarding Children Procedures. The full KSCB procedures and additional guidance relating to specific safeguarding issues can be found on the KSCB website www.kscb.org.uk
- All members of staff are expected to be aware of and follow this approach:



- It may not always be appropriate to go through all four stages sequentially and if a child is in immediate danger or is at risk of harm, a request for support should be made immediately to Children's Social Work Services and/or the police.
- **The role of the school in situations where there are child protection concerns is NOT to investigate but to recognise and refer.**
- The DSL may seek advice or guidance from Area Education Safeguarding Adviser from the Education Safeguarding Team before making a decision regarding next steps. They may also seek advice or guidance from a social worker at the Front Door service.
- All members of staff are made aware of the internal and local early help support services. Where a child is being offered or receiving early help support, staff will be supported to understand their role in any early help assessment or intervention. This includes identifying emerging problems, liaising with other professionals, and in some cases acting as the lead practitioner.
- The DSL will keep all early help cases under constant review and consideration will be given to a request for support to the Front Door if the situation does not appear to be improving or is getting worse.

- All staff are aware of the process for making request for support referrals for statutory assessments under the Children Act 1989, along with the role they might be expected to play in such assessments.
- **In all but the most exceptional circumstances, parents /carers will be made aware of the concerns for their child at the earliest possible stage.** In the event of a request for support to the Front Door being necessary, parents/carers will be informed and consent to this will be sought in line with guidance provided by KSCB, unless there is a valid reason not to do so, for example if to do so would put a child at risk of harm or would undermine a criminal investigation.
- In the absence of the availability of the DSL to discuss an immediate and urgent concern, staff can seek advice from the Deputy DSL. They may also seek advice from the Education Safeguarding Team or via consultation from a Local Authority social worker at the Front Door. If anyone other than the DSL makes a referral to external services, then they will inform the DSL as soon as possible.
- On occasion, staff may pass information about a child to the DSL but remain anxious about action subsequently taken. Staff should feel able to check the progress of a case with the DSL so that they can reassure themselves the child is safe and their welfare is being considered. If following this process, the staff member remains concerned it is the responsibility of that staff member to follow the school's escalation process.
- If a child's situation does not appear to be improving, then the DSL (or the person that made the request for support) will consider re-referral. Professional disagreements (escalation) will be responded to in line with the KSCB procedures and DSLs may request support via the Education Safeguarding Team.

8. Record Keeping

- Staff will record any welfare concern that they have about a child on the school's safeguarding system, CPOMS (with a body map if injuries have been observed) and this notifies without delay all DSLs. Records will be completed as soon as possible after the incident/event, using the child's words.
- All safeguarding concerns, discussions and decisions (and justifications for those decisions) will be recorded in writing. If members of staff are in any doubt about recording requirements, they should discuss their concerns with DSL.
- Incident/Welfare concern files are held in the DSL office. All concerns raised within school are reported directly onto CPOMS.
- Safeguarding records are kept for individual children and are maintained separately from all other records relating to the child in the school. Safeguarding records are kept in accordance with data protection legislation and are retained centrally and securely by the DSL. Safeguarding records are shared with staff on a 'need to know' basis only.
- All safeguarding records will be transferred in accordance with data protection legislation to the child's subsequent school/setting, under confidential and separate cover. These will be given to the new DSL and a receipt of delivery will be obtained.
- Detailed guidance on Record Keeping is found in a separate document "Guidelines for Safeguarding Record Keeping in Schools".

- The Headteacher will be kept informed of any significant issues by the DSL.

9. Multi-agency Working

- Herne Bay Junior School recognises and is committed to its responsibility to work with other professionals and agencies in line with statutory guidance (WTSC 2018).

Schools are not the investigating agency when there are child protection concerns. We will however contribute to the investigation and assessment processes as required. Herne Bay Junior School recognises the importance of multi-agency working and will support attendance at relevant safeguarding meetings, including Child Protection Conferences, Core Groups, Strategy Meetings, Child in Need meetings or other early help multi-agency meetings.

- The School Leadership Team and DSL will work to establish strong and co-operative relationships with relevant professionals in other agencies.

10. Confidentiality and Information Sharing

- Herne Bay Junior School recognises that all matters relating to child protection are confidential. The Headteacher or DSL will only disclose information about a pupil to other members of staff on a 'need to know' basis.
- All members of staff must be aware that whilst they have duties to keep any information confidential, they also have a professional responsibility to share information with other agencies to safeguard children.
- All staff must be aware that they cannot promise a child to keep secrets which might compromise the child's safety or wellbeing.
- DfE Guidance on Information Sharing (July 2018) provides further detail. (Safeguarding Information files- DSL/ HT office and staffroom)

11. Complaints

- The school has a **Complaints Procedure** available to parents, pupils and members of staff and visitors who wish to report concerns. This can be found on the school website.
- All reported concerns will be taken seriously and considered within the relevant and appropriate process. Anything that constitutes an allegation against a member of staff or volunteer will be dealt with under the specific **Procedures for Managing Allegations against Staff policy**. This can be found in Safeguarding Information files- DSL/ HT office and staffroom.

12. Staff Induction, Awareness and Training

- All members of staff have been provided with a copy of Part One of "*Keeping Children Safe in Education*" (2019) which covers Safeguarding information for all staff. School leaders will read the entire document. School leaders and all members of staff who work directly with children will access Annex A within Keeping Children Safe in Education 2018. Members of staff have signed to confirm that they have read and understood Part One and Annex A. Register is held in DSL office.
- The DSL will ensure that all new staff and volunteers (including temporary staff) are aware of the school's internal safeguarding processes.

- All staff members (including temporary staff) will receive training to ensure they are aware of a range of safeguarding issues.
- All staff members (including temporary staff) will receive regular safeguarding and child protection updates, at least annually.
- All staff members (including temporary staff) will be made aware of the school's expectations regarding safe and professional practice via the staff behaviour policy (or code of conduct) and Acceptable Use Policy.
- The DSL and Head Teacher will provide an annual report to the Governing Body detailing safeguarding training undertaken by all staff and will maintain up to date register of who has been trained.
- Although the school has a nominated lead for the governing body (George Smart), all members of the governing body will access appropriate safeguarding training which covers their specific strategic responsibilities on a regular basis.

13. Safe Working Practice

- All members of staff are required to work within clear guidelines on Safe Working Practice / the school's Code of Conduct.
- Staff should be aware of the school's **Behaviour Management and Physical Intervention Policies**, and any physical interventions must be in line with agreed policy and procedures.
- Staff should be particularly aware of the professional risks associated with the use of social media and electronic communication (email, mobile phones, texting, social network sites etc.) and should adhere to the school's online safety and Acceptable Use policies.

14. Staff Supervision and Support

- Any member of staff affected by issues arising from concerns for children's welfare or safety can seek support from the DSL.
- The induction process will include familiarisation with child protection responsibilities and procedures to be followed if members of staff have any concerns about a child's safety or welfare.
- The school will provide appropriate supervision and support for all members of staff to ensure that:
 - All staff are competent to carry out their responsibilities for safeguarding and promoting the welfare of children
 - All staff will be supported by the DSL in their safeguarding role.
 - All members of staff have regular reviews of their own practice to ensure they improve over time.

The DSL will also put staff in touch with outside agencies for professional support if they so wish. Staff can also approach organisations such as their Union, the Education Support Partnership or other similar organisations directly.

15. Safer Recruitment

- Herne Bay Junior School is committed to ensure that we develop a safe culture and that all steps are taken to recruit staff and volunteers who are safe to work with our pupils and staff.
- The Governing Body and Leadership Team are responsible for ensuring that the school follows safe recruitment processes outlined within guidance.
- Herne Bay Junior School is responsible for ensuring that the school maintains an accurate Single Central Record (SCR) in line with statutory guidance.
- The Governing Body will ensure at least one of the persons who conducts an interview has completed safer recruitment training.
- We are also committed to supporting the statutory guidance from the Department for Education on the application of the Childcare (Disqualification) Regulations 2009 and related obligations under the Childcare Act 2006 in schools.
- We advise all staff to disclose any reason that may affect their suitability to work with children including convictions, cautions, court orders, cautions, reprimands and warnings.

16. Allegations Against Members of Staff and Volunteers

- Herne Bay Junior School recognises that it is possible for staff and volunteers to behave in a way that might cause harm to children and takes seriously any allegation received. Such allegations should be referred immediately to the headteacher or deputy in their absence who will first contact the Local Authority Designated Officer (LADO) to agree further action to be taken in respect of the child and staff member. In the event of allegations of abuse being made against the headteacher then staff are advised that allegations should be reported to the Chair of Governors who will contact the LADO in the first instance.
- All staff and volunteers should feel able to raise concerns about poor or unsafe practice and such concerns will always be taken seriously by the senior leadership team.
- All members of staff are made aware of the school's Whistleblowing procedure and that it is a disciplinary offence not to report concerns about the conduct of a colleague that could place a child at risk. Staff can also access the NSPCC whistleblowing helpline if they do not feel able to raise concerns regarding child protection failures internally. Staff can call: 0800 028 0285 (8:00 AM to 8:00 PM Monday to Friday) or email: help@nspcc.org.uk
- Herne Bay Junior School has a legal duty to refer to the Disclosure and Barring Service (DBS) anyone who has harmed, or poses a risk of harm, to a child, or if there is reason to believe the member of staff has committed one of a number of listed offences, and who has been removed from working (paid or unpaid) in regulated activity, or would have been removed had they not left. The DBS will consider whether to bar the person. If these circumstances arise in relation to a member of staff at our school, a referral will be made as soon as possible after the resignation or removal of the individual in accordance with advice from the LADO and/or Schools Personnel Service.

When in doubt – consult

17. Safeguarding Children with Special Educational Needs and Disabilities

- Herne Bay Junior School acknowledges that children with special educational needs (SEN) and disabilities can face additional safeguarding challenges as they may have an impaired capacity to resist or avoid abuse.
- Herne Bay Junior School will ensure that children with SEN and disabilities, specifically those with communication difficulties will be supported to ensure that their voice is heard and acted upon.
- Members of staff are encouraged to be aware that children with SEN and disabilities can be disproportionately impacted by safeguarding concerns such as bullying. All members of staff will be encouraged to appropriately explore possible indicators of abuse such as behaviour/mood change or injuries and not to assume that they are related to the child's disability and be aware that children with SEN and disabilities may not always outwardly display indicators of abuse.

18. Online Safety

- It is recognised by Herne Bay Junior School that the use of technology presents challenges and risks to children and adults both inside and outside of school.
- The DSL has overall responsibility for online safeguarding within the school.
- Herne Bay Junior School identifies that the issues can be broadly categorised into three areas of risk:
 - **content:** being exposed to illegal, inappropriate or harmful material
 - **contact:** being subjected to harmful online interaction with other users
 - **conduct:** personal online behaviour that increases the likelihood of, or causes, harm.
- The DSL and leadership team have read annex C regarding Online Safety within 'Keeping Children Safe in Education' 2018.
- Herne Bay Junior School recognises the specific risks that can be posed by mobile phones and cameras and in accordance with KCSIE 2018 has appropriate policies in place that are shared and understood by all members of the school community. Further information relating to this can be found in the schools **Online Safety Policy**, **Acceptable Use Policy** and **Image Use Policy** which can be found on the school website.
- Herne Bay Junior School will ensure that appropriate filtering and monitoring systems are in place when pupils and staff access school systems and internet provision.
- Herne Bay Junior School acknowledges that whilst filtering and monitoring is an important part of schools' online safety responsibilities, it is only one part of our approach to online safety. Pupils and adults may have access to systems external to the school control such as mobile phones and other internet enabled devices and technology and where concerns are identified appropriate action will be taken.

- Herne Bay Junior School will ensure a comprehensive whole school curriculum response is in place to enable all pupils to learn about and manage online risks effectively and will support parents and the wider school community (including all members of staff) to become aware and alert to the need to keep children safe online.

19. Curriculum and Staying Safe

- We recognise that schools play an essential role in helping children to understand and identify the parameters of what is appropriate child and adult behaviour; what is 'safe'; to recognise when they and others close to them are not safe; and how to seek advice and support when they are concerned.
- Our curriculum provides opportunities for increasing self-awareness, self-esteem, social and emotional understanding, assertiveness and decision making so that students have a range of contacts and strategies to ensure their own protection and that of others. Online safety is integrated into the curriculum.
- Our school systems support children to talk to a range of staff. Children will be listened to and heard and their concerns will be taken seriously and acted upon as appropriate.

20. The Use of School Premises by Other Organisations

- Where services or activities are provided separately by another body using the school premises, the Head Teacher and Governing Body will seek written assurance that the organisation concerned has appropriate policies and procedures in place with regard to safeguarding children and child protection and that relevant safeguarding checks have been made in respect of staff and volunteers.
- If this assurance is not achieved, then an application to use premises will be refused.

21. Security

- All members of staff have a responsibility for maintaining awareness of buildings and grounds security and for reporting concerns that may come to light.
- Appropriate checks will be undertaken in respect of visitors and volunteers coming into school as outlined within guidance. Visitors will be expected to sign in and out via the office visitors log and to display a visitor's badge whilst on school site. Any individual who is not known or identifiable should be challenged for clarification and reassurance.
- The school will not accept the behaviour of any individual (parent or other) that threatens school security or leads others (child or adult) to feel unsafe. Such behaviour will be treated as a serious concern and may result in a decision to refuse access for that individual to the school site.

22. Monitoring and Review

- All school staff (including temporary staff and volunteers) will have access to a copy of this policy. The policy will also be available to parents/carers.
- The policy forms part of our school development plan and will be reviewed annually.

23. Local Support

- All members of staff in Herne Bay Junior School are made aware of local support available
 - **Contact details for Area Safeguarding Adviser (Education Safeguarding Team)**

East Kent – Swale, Canterbury, Thanet (Brook House, Reeves Way, Whitstable CT5 3SS)	
Julie Maguire Area Safeguarding Adviser (Education)	Office: 03000 418503 Mobile: 07968620707 Julie.maguire@kent.gov.uk
Lin Storton/ Heather Bowden Safeguarding Admin Support (part-time)	

- www.kelsi.org.uk/support-for-children-and-young-people/child-protection-and-safeguarding/safeguarding-contacts
- **Contact details for Online Safety in the Education Safeguarding Team**
 - Rebecca Avery, Education Safeguarding Adviser (Online Protection):
 - Ashley Assiter, e-Safety Development Officer
 - 03000 415797
 - esafetyofficer@kent.gov.uk (non-urgent issues only)
- **Contact details for the LADO**
 - Telephone: 03000 410888
 - Email: kentchildrenslado@kent.gov.uk
- **Childrens Social Work Services**
 - Central Duty Team: 03000 411111
 - Out of Hours Number: 03000 419191
- **Kent Police**
 - 101 (or 999 if there is an immediate risk of harm)
- **Kent Safeguarding Children Board (KSCB)**
 - kscb@kent.gov.uk
 - 03000 421126

24. National Support

Support for staff

- Education Support Partnership: www.educationsupportpartnership.org.uk
- Professional Online Safety Helpline: www.saferinternet.org.uk/helpline

Support for Pupils

- NSPCC: www.nspcc.org.uk
- ChildLine: www.childline.org.uk
- Papyrus: www.papyrus-uk.org
- Young Minds: www.youngminds.org.uk

- The Mix: www.themix.org.uk

Support for adults

- Family Lives: www.familylives.org.uk
- Crime Stoppers: www.crimestoppers-uk.org
- Victim Support: www.victimsupport.org.uk
- Kidscape: www.kidscape.org.uk
- The Samaritans: www.samaritans.org
- Mind: www.mind.org.uk
- NAPAC (National Association for People Abused in Childhood): napac.org.uk
- MOSAC: www.mosac.org.uk
- Action Fraud: www.actionfraud.police.uk

Support for Learning Disabilities

- Respond: www.respond.org.uk
- Mencap: www.mencap.org.uk

Domestic Abuse

- Refuge: www.refuge.org.uk
- Women's Aid: www.womensaid.org.uk
- Men's Advice Line: www.mensadviceline.org.uk
- Mankind: www.mankindcounselling.org.uk

Honour based Violence

- Forced Marriage Unit: <https://www.gov.uk/guidance/forced-marriage>

Sexual Abuse and CSE

- Lucy Faithfull Foundation: www.lucyfaithfull.org.uk
- Stop it Now!: www.stopitnow.org.uk
- Parents Protect: www.parentsprotect.co.uk
- CEOP: www.ceop.police.uk
- Marie Collins Foundation: www.mariecollinsfoundation.org.uk
- Internet Watch Foundation (IWF): www.iwf.org.uk

Online Safety

- Childnet International: www.childnet.com
- UK Safer Internet Centre: www.saferinternet.org.uk
- Parents Info: www.parentinfo.org
- Internet Matters: www.internetmatters.org
- Net Aware: www.net-aware.org.uk
- ParentPort: www.parentport.org.uk
- Get safe Online: www.getsafeonline.org

Radicalisation and hate

- Educate against Hate: www.educateagainsthate.com
- Counter Terrorism Internet Referral Unit: www.gov.uk/report-terrorism
- True Vision: www.report-it.org.uk